



CD40L, Soluble (human) ELISA Kit

Manufactured by Bender MedSystems.

ALX-850-030-KI01

96 wells (~80 tests)

(Version 20: October 11, 2007)

NORTH AMERICA

AXXORA, LLC
6181 Cornerstone Court East
Suite 103
San Diego, CA 92121-4727
Phone: (858) 550-8828
Fax: (858) 550-8825
E-mail: axxora-usa@axxora.com

SWITZERLAND/REST OF THE WORLD

ALEXIS CORPORATION
Industriestrasse 17, Postfach
CH-4415 Lausen / Switzerland
Phone: +41 61 926 89 89
Fax: +41 61 926 89 79
E-mail: alexis-ch@alexis-corp.com

GERMANY

AXXORA DEUTSCHLAND GmbH
Marie-Curie-Strasse 8
DE-79539 Lörrach
Phone: (07621) 5500 522
Fax: (07621) 5500 523
E-mail: axxora-de@axxora.com

UK & IRELAND

AXXORA (UK) LTD.
P.O. Box 6757
Bingham, Nottingham NG13 8LS
Phone: +44 1949 836111
Fax: +44 1949 836222
E-mail: axxora-uk@axxora.com

For laboratory use only. Not for human or diagnostic use.

TABLE OF CONTENTS

1	Intended Use	3
2	Summary	3
3	Principles of the Test	5
4	Reagents Provided	6
5	Storage Instructions – ELISA Kit	8
6	Specimen Collection and Storage Instructions	8
7	Materials Required But Not Provided	9
8	Precautions for Use	10
9	Preparation of Reagents	12
10	Test Protocol	16
11	Calculation of Results	20
12	Limitations	23
13	Performance Characteristics	24
14	Bibliography	29
15	Ordering Information	31
16	Reagent Preparation Summary	32
17	Test Protocol Summary	33

1 Intended Use

The human sCD40L ELISA is an enzyme-linked immunosorbent assay for the quantitative detection of human sCD40L. **The human sCD40L ELISA is for research use only. Not for diagnostic or therapeutic procedures.**

2 Summary

CD40 belongs to the TNF receptor superfamily. While the biological role of some of the ligand-receptor pairs in this family still remains obscure, CD40 has proven its importance (3).

A key role of CD40/CD40ligand interactions in immune activation, particularly in T-cell dependent B cell responses is anticipated. This molecule as well as the other ligands of the family share the property of co-stimulation of T-cell proliferation and are all expressed by activated T-cells.

The programmed cell death has been suggested to be involved in clonal elimination of self-reactive lymphocytes for the normal function of the immune system. Interaction with membrane bound self antigens may eliminate self-reactive nature B cells by apoptosis. Antigen-receptor mediated B cell apoptosis is blocked when a signal is transduced via the CD40 molecule on the B cell surface (10).

Because the ligand of CD40 (CD40L) is expressed on activated T helper cells, B cells may escape from apoptosis and are activated when the immune system interacts with foreign antigens, which are normally able to activate T-helper cells. Thus the CD40/CD40L interaction plays a central role in the various phases of the B cell response to T-dependent antigens (8).

Taken together, B cells can participate in regulating their own destruction. Protection against Fas-dependent apoptosis afforded by immunoglobulin-receptor engagement may constitute a fail-safe mechanism that eliminates bystander B cells activated by CD40L-expressing T cells, but ensures survival of antigen-specific B cells (9).

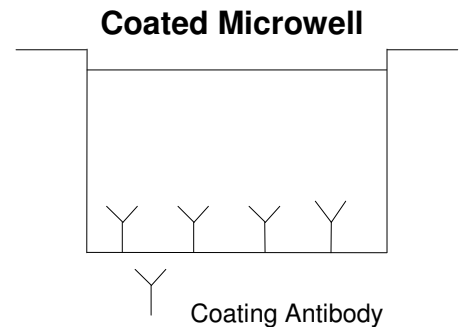
CD40 Ligand is expressed on the surface of activated CD4⁺ T cells, basophils, and mast cells. Binding of CD40L to its receptor, CD40, on the surface of B cells stimulates B-cell proliferation, adhesion and differentiation. A soluble isoform of CD40L has been shown to exist in the circulation. This soluble molecule is a homotrimer of a 18kDa protein exhibiting full activity in B cell proliferation and differentiation assays, is able to rescue B cells from apoptosis and binds soluble CD40 (4, 6).

CD40L is discussed in relation to a potential role in supporting B cell tumors and it has been discovered that the molecular defect in the X-linked Hyper-IgM-Syndrome (1) is targeted to the CD40L gene, it is functional involved in B cell hybridomas (5) and chronic lymphocytic leukemia (2) as well as several autoimmune diseases (7).

3 Principles of the Test

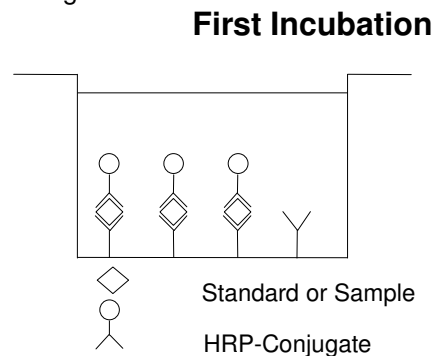
An anti-human sCD40L coating antibody is adsorbed onto microwells.

Figure 1



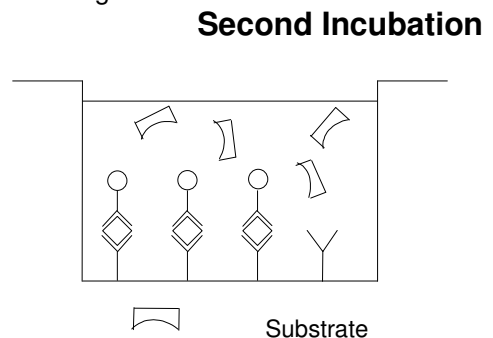
Human sCD40L present in the sample or standard binds to antibodies adsorbed to the microwells. A HRP-conjugated anti-human sCD40L antibody is added and binds to human sCD40L captured by the first antibody.

Figure 2



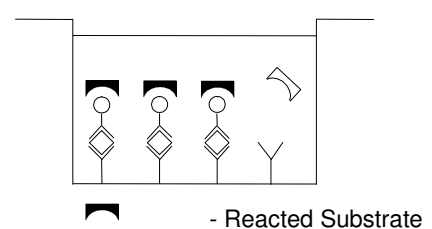
Following incubation unbound HRP-conjugated anti-human sCD40L is removed during a wash step, and substrate solution reactive with HRP is added to the wells.

Figure 3



A coloured product is formed in proportion to the amount of human sCD40L present in the sample or standard. The reaction is terminated by addition of acid and absorbance is measured at 450 nm. A standard curve is prepared from 7 human sCD40L standard dilutions and human sCD40L concentration determined.

Figure 4



4 Reagents Provided

4.1 Reagents for human sCD40L ELISA BMS239 (96 tests)

- 1 aluminium pouch with a **Microwell Plate coated** with monoclonal antibody to human sCD40L
- 1 vial (200 µl) **HRP-Conjugate** anti-human sCD40L monoclonal antibody
- 2 vials human sCD40L **Standard** lyophilized, 20 ng/ml upon reconstitution
- 1 vial **Control high**, lyophilized
- 1 vial **Control low**, lyophilized
- 1 vial (12 ml) **Sample Diluent**

(Please note: In some cases the Sample Diluent contains an insoluble precipitate which does not interfere in any way with the test performance. Use according to protocol.)

- 1 vial (5 ml) **Assay Buffer Concentrate** 20x (PBS with 1% Tween 20 and 10% BSA)
- 1 bottle (50 ml) **Wash Buffer Concentrate** 20x (PBS with 1% Tween 20)
- 1 vial (15 ml) **Substrate Solution** (tetramethyl-benzidine)
- 1 vial (12 ml) **Stop Solution** (1M Phosphoric acid)
- 1 vial (0.4 ml) **Blue-Dye**
- 1 vial (0.4 ml) **Green-Dye**
- 2 **Dilution Plates**
- 2 **Adhesive Films**

4.2 Reagents for human sCD40L ELISA BMS239TEN (10x96 tests)

10 aluminium pouches with a **Microwell Plate coated** with monoclonal antibody to human sCD40L

10 vials (200 µl) **HRP-Conjugate** anti-human sCD40L monoclonal antibody

10 vials human sCD40L **Standard** lyophilized, 20 ng/ml upon reconstitution

10 vials **Control high**, lyophilized

10 vials **Control low**, lyophilized

10 vials (12 ml) **Sample Diluent**

(Please note: In some cases the Sample Diluent contains an insoluble precipitate which does not interfere in any way with the test performance. Use according to protocol.)

2 vials (5 ml) **Assay Buffer Concentrate** 20x (PBS with 1% Tween 20 and 10% BSA)

3 bottles (50 ml) **Wash Buffer Concentrate** 20x (PBS with 1% Tween 20)

10 vials (15 ml) **Substrate Solution** (tetramethyl-benzidine)

10 vials (12 ml) **Stop Solution** (1M Phosphoric acid)

6 vials (0.4 ml) **Blue-Dye**

6 vials (0.4 ml) **Green-Dye**

10 **Dilution Plates**

10 **Adhesive Films**

5 Storage Instructions – ELISA Kit

Store kit reagents between 2° and 8°C except controls. Store lyophilized controls at -20°C.

Immediately after use remaining reagents should be returned to cold storage (2° to 8°C), controls to -20°C, respectively. Expiry of the kit and reagents is stated on labels.

Expiry of the kit components can only be guaranteed if the components are stored properly, and if, in case of repeated use of one component, this reagent is not contaminated by the first handling.

6 Specimen Collection and Storage Instructions

Cell culture supernatant, serum and plasma were tested with this assay. Other biological samples might be suitable for use in the assay.

ALX-850-030 is not suitable for the detection of very low levels of sCD40L in plasma; for this please refer to CD40L, Soluble (human) ELISA Kit (high sensitivity) (Prod. No. ALX-850-311).

Remove serum or plasma from the clot or cells as soon as possible after clotting and separation.

Pay attention to a possible “**Hook Effect**” due to high sample concentrations (see 11).

Samples containing a visible precipitate must be clarified prior to use in the assay. Do not use grossly hemolyzed or lipemic specimens.

Samples should be aliquoted and must be stored frozen at -20°C to avoid loss of bioactive human sCD40L. If samples are to be run within 24 hours, they may be stored at 2° to 8°C (for sample stability refer to 13.5).

Avoid repeated freeze-thaw cycles. Prior to assay, the frozen sample should be brought to room temperature slowly and mixed gently.

7 Materials Required But Not Provided

- 5 ml and 10 ml graduated pipettes
- 5 μ l to 1000 μ l adjustable single channel micropipettes with disposable tips
- 50 μ l to 300 μ l adjustable multichannel micropipette with disposable tips
- Multichannel micropipette reservoir
- Beakers, flasks, cylinders necessary for preparation of reagents
- Device for delivery of wash solution (multichannel wash bottle or automatic wash system)
- Microwell strip reader capable of reading at 450 nm (620 nm as optional reference wave length)
- Glass-distilled or deionized water
- Statistical calculator with program to perform regression analysis

8 Precautions for Use

- All chemicals should be considered as potentially hazardous. We therefore recommend that this product is handled only by those persons who have been trained in laboratory techniques and that it is used in accordance with the principles of good laboratory practice. Wear suitable protective clothing such as laboratory overalls, safety glasses and gloves. Care should be taken to avoid contact with skin or eyes. In the case of contact with skin or eyes wash immediately with water. See material safety data sheet(s) and/or safety statement(s) for specific advice.
- Reagents are intended for research use only and are not for use in diagnostic or therapeutic procedures.
- Do not mix or substitute reagents with those from other lots or other sources.
- Do not use kit reagents beyond expiration date on label.
- Do not expose kit reagents to strong light during storage or incubation.
- Do not pipette by mouth.
- Do not eat or smoke in areas where kit reagents or samples are handled.
- Avoid contact of skin or mucous membranes with kit reagents or specimens.
- Rubber or disposable latex gloves should be worn while handling kit reagents or specimens.
- Avoid contact of substrate solution with oxidizing agents and metal.
- Avoid splashing or generation of aerosols.
- In order to avoid microbial contamination or cross-contamination of reagents or specimens which may invalidate the test use disposable pipette tips and/or pipettes.
- Use clean, dedicated reagent trays for dispensing the conjugate and substrate reagent.

- Exposure to acid inactivates the conjugate.
- Glass-distilled water or deionized water must be used for reagent preparation.
- Substrate solution must be at room temperature prior to use.
- Decontaminate and dispose specimens and all potentially contaminated materials as they could contain infectious agents. The preferred method of decontamination is autoclaving for a minimum of 1 hour at 121.5 °C.
- Liquid wastes not containing acid and neutralized waste may be mixed with sodium hypochlorite in volumes such that the final mixture contains 1.0% sodium hypochlorite. Allow 30 minutes for effective decontamination. Liquid waste containing acid must be neutralized prior to the addition of sodium hypochlorite.

9 Preparation of Reagents

Buffer concentrates should be brought to room temperature and should be diluted before starting the test procedure.

9.1 Wash Buffer

If crystals have formed in the **Wash Buffer Concentrate**, warm it gently until they have completely dissolved.

Pour entire contents (50 ml) of the Wash Buffer Concentrate into a clean 1000 ml graduated cylinder. Bring to final volume of 1000 ml with glass-distilled or deionized water. Mix gently to avoid foaming. The pH of the final solution should adjust to 7.4.

Transfer to a clean wash bottle and store at 2° to 25°C. Please note that Wash Buffer is stable for 30 days.

Wash Buffer may also be prepared as needed according to the following table:

Number of Strips	Wash Buffer Concentrate (ml)	Distilled Water (ml)
1 - 6	25	475
1 - 12	50	950

9.2 Assay Buffer (1x)

Pour the entire contents (5 ml) of the **Assay Buffer Concentrate** (20x) into a clean 100 ml graduated cylinder. Bring to final volume of 100 ml with distilled water. Mix gently to avoid foaming.

Store at 2° to 8°C. Please note that the Assay Buffer (1x) is stable for 30 days.

Assay Buffer (1x) may also be prepared as needed according to the following table:

Number of Strips	Assay Buffer Concentrate (ml)	Distilled Water (ml)
1 - 6	2.5	47.5
1 - 12	5.0	95.0

9.3 HRP-Conjugate

Please note that the HRP-Conjugate should be used within 30 minutes after dilution.

Make a 1:100 dilution of the concentrated **HRP-Conjugate** solution with Assay Buffer (1x) in a clean plastic tube as needed according to the following table:

Number of Strips	HRP-Conjugate (ml)	Assay Buffer (1x) (ml)
1 - 6	0.06	5.94
1 - 12	0.12	11.88

9.4 Human sCD40L Standard

Reconstitute **human sCD40L standard** by addition of distilled water. Reconstitution volume is stated on the label of the standard vial. Swirl or mix gently to insure complete and homogeneous solubilization (concentration of reconstituted standard = 20 ng/ml). The standard has to be used immediately after reconstitution and cannot be stored.

9.4.1 External Standard Dilution

Label 7 tubes, one for each standard point.

S1, S2, S3, S4, S5, S6, S7

Then prepare 1:2 serial dilutions for the standard curve as follows:

Pipette 225 μ l of Sample Diluent into each tube.

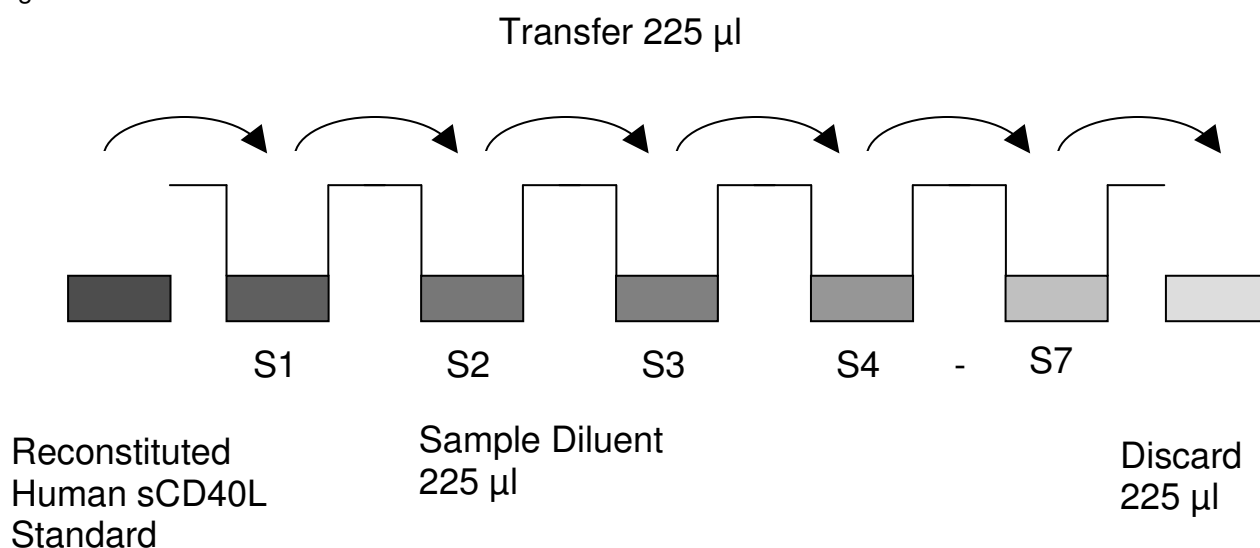
Pipette 225 μ l of reconstituted standard into the first tube, labelled S1, and mix (concentration of standard 1 = 10 ng/ml).

Pipette 225 μ l of this dilution into the second tube, labelled S2, and mix thoroughly before the next transfer.

Repeat serial dilutions 4 more times thus creating the points of the standard curve (see Figure 5).

Sample Diluent serves as blank.

Figure 5



9.5 Controls

Reconstitute by adding 150 μ l distilled water to lyophilized controls. Swirl or mix gently to ensure complete and homogeneous solubilization.

Further treat the controls like your samples in the assay. For control range please refer to certificate of analysis or vial label. Store reconstituted control aliquoted at -20 $^{\circ}$ C. Avoid repeated freeze and thaw cycles.

9.6 Addition of Colour-giving Reagents: Blue-Dye, Green-Dye

In order to help our customers to avoid any mistakes in pipetting the Bender MedSystems ELISAs, Bender MedSystems offers a tool that helps to monitor the addition of even very small volumes of a solution to the reaction well by giving distinctive colours to each step of the ELISA procedure.

This procedure is optional, does not in any way interfere with the test results, and is designed to help the customer with the performance of the test, but can also be omitted, just following the instruction booklet.

Alternatively, the dye solutions from the stocks provided (**Blue-Dye**, **Green-Dye**) can be added to the reagents according to the following guidelines:

1. Diluent: Before standard and sample dilution add the **Blue-Dye** at a dilution of 1:250 (see table below) to the appropriate diluent (1x) according to the test protocol. After addition of **Blue-Dye**, proceed according to the instruction booklet.

5 ml Sample Diluent	20 µl Blue-Dye
12 ml Sample Diluent	48 µl Blue-Dye
50 ml Sample Diluent	200 µl Blue-Dye

2. HRP-Conjugate: Before dilution of the concentrated HRP-Conjugate add the **Green-Dye** at a dilution of 1:100 (see table below) to the Assay Buffer (1x) used for the final conjugate dilution. Proceed after addition of **Green-Dye** according to the instruction booklet: Preparation of HRP-Conjugate.

6 ml Assay Buffer (1x)	60 µl Green-Dye
12 ml Assay Buffer (1x)	120 µl Green-Dye

10 Test Protocol

- Remove **dilution plate** from the aluminium pouch. Determine the number of microwell strips required to test the desired number of samples plus appropriate number of wells needed for running blanks and standards. Each sample, standard, blank and optional control sample should be assayed in duplicate.
- Prepare **standard dilutions on the dilution plate** as follows:
Add 100 μ l of Sample Diluent in duplicate to all **standard wells**. Pipette 100 μ l of prepared **standard** (see Preparation of Standard 9.4, concentration = 20 ng/ml) in duplicate into well A1 and A2 (see Table 1). Mix the contents of wells A1 and A2 by repeated aspiration and ejection (concentration of standard 1, S1 = 10 ng/ml), and transfer 100 μ l to wells B1 and B2, respectively (see Figure 6). Continue this procedure 5 times, creating two rows of human sCD40L standard dilutions ranging from 10.00 to 0.16 ng/ml. Discard 100 μ l of the contents from the last microwells (G1, G2) used.

In case of an **external standard dilution** (see 9.4.1), pipette 100 μ l of these standard dilutions (S1 - S7) in the standard wells according to Table 1.

Figure 6

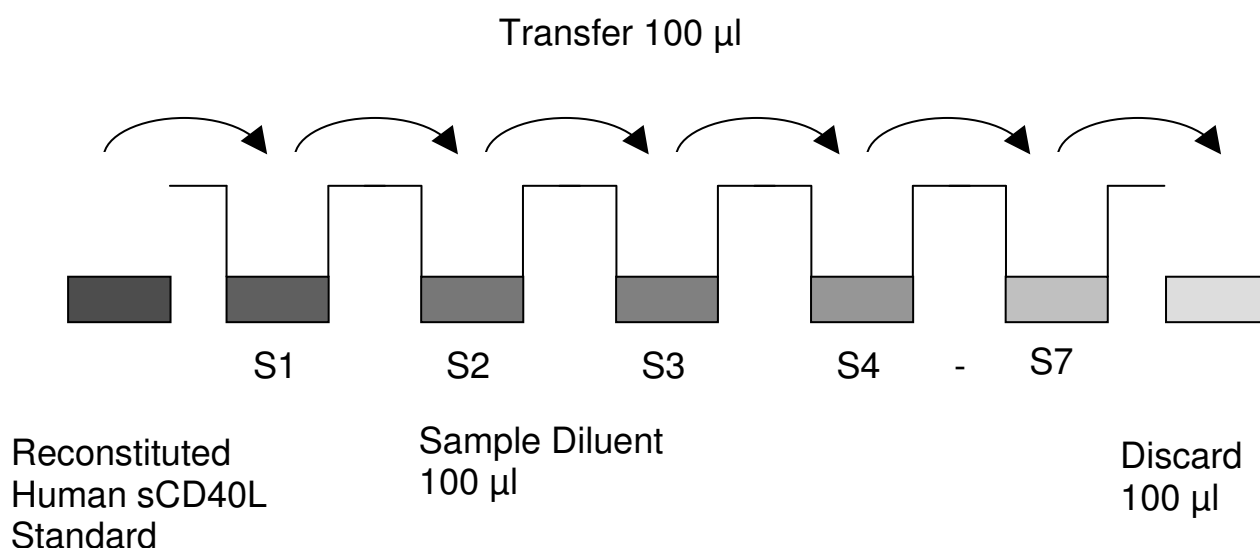


Table 1

Table depicting an example of the arrangement of blanks, standards and samples in the microwell strips of the dilution plate:

	1	2	3	4
A	Standard 1 (10.00 ng/ml)	Standard 1 (10.00 ng/ml)	Sample 1	Sample 1
B	Standard 2 (5.00 ng/ml)	Standard 2 (5.00 ng/ml)	Sample 2	Sample 2
C	Standard 3 (2.50 ng/ml)	Standard 3 (2.50 ng/ml)	Sample 3	Sample 3
D	Standard 4 (1.25 ng/ml)	Standard 4 (1.25 ng/ml)	Sample 4	Sample 4
E	Standard 5 (0.63 ng/ml)	Standard 5 (0.63 ng/ml)	Sample 5	Sample 5
F	Standard 6 (0.31 ng/ml)	Standard 6 (0.31 ng/ml)	Sample 6	Sample 6
G	Standard 7 (0.16 ng/ml)	Standard 7 (0.16 ng/ml)	Sample 7	Sample 7
H	Blank	Blank	Sample 8	Sample 8

- c. Add 100 μ l of **Sample Diluent** in duplicate to the **blank wells** of the dilution plate.
- d. Add 80 μ l of **Sample Diluent** to the **sample wells** of the dilution plate.
- e. Add 20 μ l of each **sample** in duplicate to the **sample wells** of the dilution plate.
- f. Prepare **HRP-Conjugate** (see Preparation of HRP-Conjugate 9.3).
- g. Add 100 μ l of **HRP-Conjugate** to all wells of the dilution plate.
- h. Remove **microwell plate coated with monoclonal antibody to human sCD40L** from the aluminium pouch. Remove extra microwell strips from holder and store in foil bag with the desiccant provided at 2°-8°C sealed tightly.
- i. Wash the microwell strips twice with approximately 400 μ l **Wash Buffer** per well with thorough aspiration of microwell contents between washes. Allow the Wash Buffer to sit in the wells for about **10 – 15 seconds** before aspiration. Take care not to scratch the surface of the microwells.
After the last wash step, empty wells and tap microwell strips on absorbent pad or paper towel to remove excess Wash Buffer. Use the microwell strips immediately after washing. Alternatively microwell strips can be placed upside down on a wet absorbent paper for not longer than 15 minutes. **Do not allow wells to dry.**
- j. **Transfer** 150 μ l of the reaction mixture from the dilution plate to the microwell strips coated with monoclonal antibody to human sCD40L. Mix the contents of the dilution plate by aspiration and ejection before transferring 150 μ l to the coated microwell strips in the same scheme as prepared on the dilution plate.
- k. Cover with an adhesive film and incubate at room temperature (18 to 25°C) for 2 hours on a microplate shaker set at 100 rpm. If no rotator is available, the microwell plate can alternatively be incubated at 4 C over night.
- l. Remove adhesive film and empty wells. **Wash** microwell strips 3 times according to point i. of the test protocol. Proceed immediately to the next step.

- m. Pipette 100 µl of **TMB Substrate Solution** to all wells.
- n. Incubate the microwell strips at room temperature (18° to 25 °C) for about 10 min. Avoid direct exposure to intense light.

The colour development on the plate should be monitored and the substrate reaction stopped (see next point of this protocol) before positive wells are no longer properly recordable. Determination of the ideal time period for colour development has to be done individually for each assay.

It is recommended to add the stop solution when the highest standard has developed a dark blue colour. Alternatively the colour development can be monitored by the ELISA reader at 620 nm. The substrate reaction should be stopped as soon as Standard 1 has reached an OD of 0.6 – 0.65.

- o. Stop the enzyme reaction by quickly pipetting 100 µl of **Stop Solution** into each well. It is important that the Stop Solution is spread quickly and uniformly throughout the microwells to completely inactivate the enzyme. Results must be read immediately after the Stop Solution is added or within one hour if the microwell strips are stored at 2 - 8 °C in the dark.
- p. Read absorbance of each microwell on a spectro-photometer using 450 nm as the primary wave length (optionally 620 nm as the reference wave length; 610 nm to 650 nm is acceptable). Blank the plate reader according to the manufacturer's instructions by using the blank wells. Determine the absorbance of both the samples and the standards.

Note: In case of incubation without shaking the obtained O.D. values may be lower than indicated below. Nevertheless the results are still valid.

11 Calculation of Results

- Calculate the average absorbance values for each set of duplicate standards and samples. Duplicates should be within 20 per cent of the mean value.
- Create a standard curve by plotting the mean absorbance for each standard concentration on the ordinate against the human sCD40L concentration on the abscissa. Draw a best fit curve through the points of the graph (a 5-parameter curve fit is recommended).
- To determine the concentration of circulating human sCD40L for each sample, first find the mean absorbance value on the ordinate and extend a horizontal line to the standard curve. At the point of intersection, extend a vertical line to the abscissa and read the corresponding human sCD40L concentration.
- **If instructions in this protocol have been followed samples have been diluted 1:5 (20 µl sample + 80 µl Sample Diluent), the concentration read from the standard curve must be multiplied by the dilution factor (x 5).**
- **Calculation of samples with a concentration exceeding standard 1 will result in incorrect, low human sCD40L levels (Hook Effect). Such samples require further external predilution according to expected human sCD40L values with Sample Diluent in order to precisely quantitate the actual human sCD40L level.**
- It is suggested that each testing facility establishes a control sample of known human sCD40L concentration and runs this additional control with each assay. If the values obtained are not within the expected range of the control, the assay results may be invalid.
- A representative standard curve is shown in Figure 7. This curve cannot be used to derive test results. Each laboratory must prepare a standard curve for each group of microwell strips assayed.

Figure 7

Representative standard curve for human sCD40L ELISA. Human sCD40L was diluted in serial 2-fold steps in Sample Diluent. Do not use this standard curve to derive test results. A standard curve must be run for each group of microwell strips assayed.

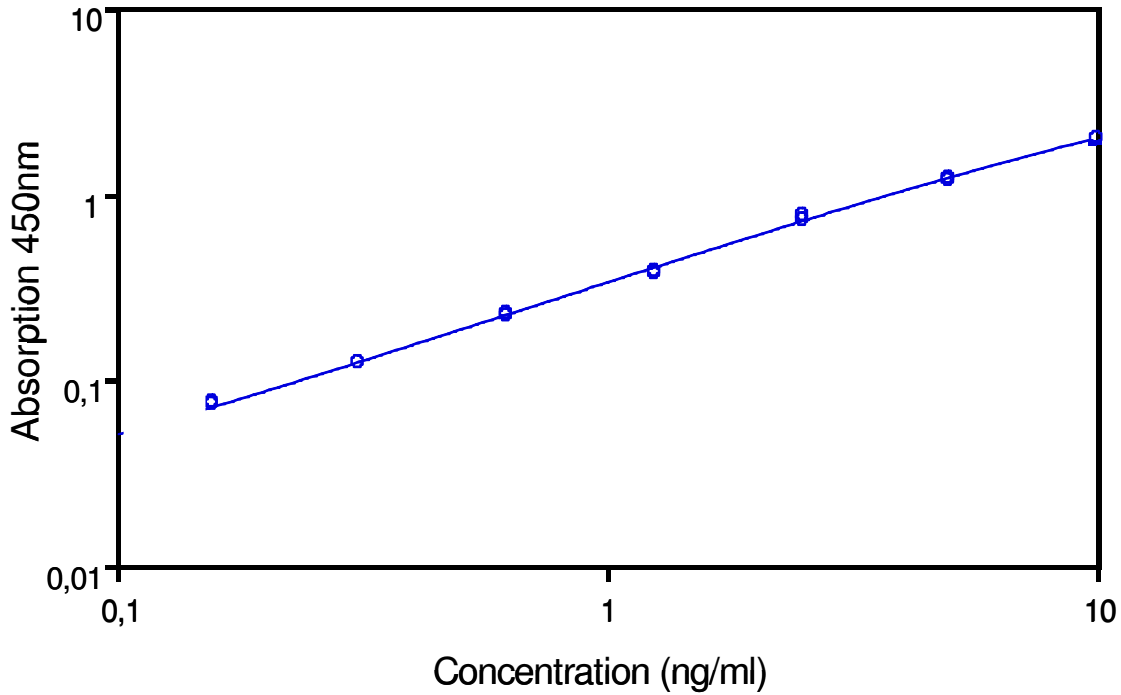


Table 2

Typical data using the human sCD40L ELISA

Measuring wavelength: 450 nm

Reference wavelength: 620 nm

Standard	Human sCD40L Concentration (ng/ml)	O.D. at 450 nm	Mean O.D. at 450 nm	C.V. (%)
1	10.00	1.997	1.979	1.3
	10.00	1.960	1.202	
2	5.00	1.194	0.734	0.9
	5.00	1.210	0.377	
3	2.50	0.713	0.224	4.0
	2.50	0.755	0.122	
4	1.25	0.385	0.075	3.0
	1.25	0.369	0.028	
5	0.63	0.225	1.979	0.9
	0.63	0.222	1.202	
6	0.31	0.122	0.734	0.0
	0.31	0.122	0.377	
7	0.16	0.076	0.224	0.5
	0.16	0.074	0.122	
Blank	0	0.029	0.075	
	0	0.026	0.028	

The OD values of the standard curve may vary according to the conditions of assay performance (e.g. operator, pipetting technique, washing technique or temperature effects). Furthermore shelf life of the kit may affect enzymatic activity and thus colour intensity. Values measured are still valid.

12 Limitations

- Since exact conditions may vary from assay to assay, a standard curve must be established for every run.
- Bacterial or fungal contamination of either screen samples or reagents or cross-contamination between reagents may cause erroneous results.
- Disposable pipette tips, flasks or glassware are preferred, reusable glassware must be washed and thoroughly rinsed of all detergents before use.
- Improper or insufficient washing at any stage of the procedure will result in either false positive or false negative results. Empty wells completely before dispensing fresh wash solution, fill with Wash Buffer as indicated for each wash cycle and do not allow wells to sit uncovered or dry for extended periods.
- The use of radioimmunotherapy has significantly increased the number of patients with human anti-mouse IgG antibodies (HAMA). HAMA may interfere with assays utilizing murine monoclonal antibodies leading to both false positive and false negative results. Serum samples containing antibodies to murine immunoglobulins can still be analysed in such assays when murine immunoglobulins (serum, ascitic fluid, or monoclonal antibodies of irrelevant specificity) are added to the sample.

13 Performance Characteristics

13.1 Sensitivity

The limit of detection of human sCD40L defined as the analyte concentration resulting in an absorbance significantly higher than that of the dilution medium (mean plus 2 standard deviations) was determined to be 0.06 ng/ml (mean of 6 independent assays).

13.2 Reproducibility

13.2.1 Intra-assay

Reproducibility within the assay was evaluated in 3 independent experiments. Each assay was carried out with 6 replicates of 8 serum samples containing different concentrations of human sCD40L. 2 standard curves were run on each plate. Data below show the mean human sCD40L concentration and the coefficient of variation for each sample (see Table 3). The calculated overall intra-assay coefficient of variation was 4.0%.

Table 3

The mean human sCD40L concentration and the coefficient of variation for each sample

Sample	Experiment	Mean Human sCD40L Concentration (ng/ml)	Coefficient of Variation (%)
1	1	14.8	1.6
	2	15.8	3.1
	3	15.0	1.4
2	1	12.6	0.5
	2	13.9	1.7
	3	13.3	5.8
3	1	10.9	1.3
	2	12.8	5.9
	3	11.8	3.9
4	1	10.2	2.2
	2	11.9	0.7
	3	11.1	3.4
5	1	7.3	0.8
	2	8.0	4.6
	3	7.4	5.1
6	1	6.6	5.9
	2	7.4	4.6
	3	7.0	8.3
7	1	4.9	5.9
	2	5.5	3.0
	3	4.7	2.6
8	1	2.9	13.6
	2	3.5	4.5
	3	2.9	4.8

13.2.2 Inter-assay

Assay to assay reproducibility within one laboratory was evaluated in 3 independent experiments. Each assay was carried out with 6 replicates of 8 serum samples containing different concentrations of human sCD40L. 2 standard curves were run on each plate. Data below show the mean human sCD40L concentration and the coefficient of variation calculated on 18 determinations of each sample (see Table 4). The calculated overall inter-assay coefficient of variation was 6.8%.

Table 4

The mean human sCD40L concentration and the coefficient of variation of each sample

Sample	Mean Human sCD40L Concentration (ng/ml)	Coefficient of Variation (%)
1	15.2	3.4
2	13.3	5.0
3	11.8	8.2
4	11.1	7.7
5	7.6	5.3
6	7.0	6.0
7	5.1	8.5
8	3.1	10.1

13.3 Spike Recovery

The spike recovery was evaluated by spiking 4 levels of human sCD40L into serum samples. Recoveries were determined in 4 independent experiments with 6 replicates each.

The amount of endogenous human sCD40L in unspiked serum was subtracted from the spike values.

The recovery ranged from 78% to 112% with an overall mean recovery of 91%.

13.4 Dilution Parallelism

4 serum samples with different levels of human sCD40L were analysed at serial 2 fold dilutions with 4 replicates each.

The recovery ranged from 100% to 113% with an overall recovery of 105% (see Table 5).

Table 5

Sample	Dilution	Expected Human sCD40L Concentration (ng/ml)	Observed Human sCD40L Concentration (ng/ml)	Recovery of Expected Human sCD40L Concentration (%)
1	1:5	--	14.5	--
	1:10	7.3	7.3	101
	1:20	3.6	3.7	103
	1:40	1.8	1.8	100
2	1:5	--	12.5	--
	1:10	6.3	6.7	106
	1:20	3.1	3.2	102
	1:40	1.6	1.8	112
3	1:5	--	11.1	--
	1:10	5.5	6.0	108
	1:20	2.8	2.9	106
	1:40	1.4	1.4	103
4	1:5	--	10.5	--
	1:10	5.3	5.5	104
	1:20	2.6	2.7	104
	1:40	1.3	1.5	113

13.5 Sample Stability

13.5.1 Freeze-Thaw Stability

Aliquots of serum samples (spiked or unspiked) were stored at -20 °C and thawed 5 times, and the human sCD40L levels determined. There was no significant loss of human sCD40L immunoreactivity detected by freezing and thawing.

13.5.2 Storage Stability

Aliquots of serum samples (spiked or unspiked) were stored at -20 °C, 2-8 °C, room temperature (RT) and at 37 °C, and the human sCD40L level determined after 24 h. There was no significant loss of human sCD40L immunoreactivity detected during storage at -20 °C and 2-8 °C. A significant loss of human sCD40L immunoreactivity was detected during storage at RT (57% immunoreactivity) and at 37 °C (4% immunoreactivity) after 24 h.

13.6 Comparison of Serum and Plasma

From 8 individuals, serum as well as EDTA plasma, citrate plasma, and heparin plasma obtained at the same time point were evaluated. It clearly turned out that plasma preparations give results that do not correlate with the respective serum data.

13.7 Specificity

The interference of circulating factors of the immune system was evaluated by spiking these proteins at physiologically relevant concentrations into a human sCD40L positive serum. There was no crossreactivity detected.

13.8 Expected Values

A panel of 40 sera samples from randomly selected apparently healthy donors (males and females) was tested for human sCD40L. The detected human sCD40L levels ranged between 0.03 and 3.98 ng/ml with a mean level of 2.13 ng/ml and a standard deviation of 1.00 ng/ml.

14 Bibliography

- 1) Bergman MC; Attrep JF; Grammer AC; Lipsky PE. Ligation of CD40 influences the function of human Ig-secreting B cell hybridomas both positively and negatively. *J-Immunol.* 1996 May 1; 156(9): 3118-32
- 2) Brugnani D; Rossi G; Tucci A; Cattaneo R; Airo P. Study of CD40 ligand expression in B-cell chronic lymphocytic leukemia. *Haematologica.* 1995 Sep-Oct; 80(5): 440-2
- 3) Cosman D. A family of ligands for the TNF receptor superfamily. *Stem-Cells-Dayt.* 1994 Sep; 12(5): 440-55
- 4) Durie FH; Fava RA; Foy TM; Aruffo A; Ledbetter JA; Noelle RJ. Prevention of collagen-induced arthritis with an antibody to gp39, the ligand for CD40. *Science.* 1993 Sep3; 261(5126): 1328-30
- 5) Holder MJ; Wang H; Milner AE; Casamayor M; Armitage R; Spriggs MK; Fanslow WC; MacLennan IC; Gregory CD; Gordon J; et al. Suppression of apoptosis in normal and neoplastic human B lymphocytes by CD40 ligand is independent of Bc1-2 induction. *Eur-J-Immunol.* 1993 Sep; 23(9): 2368-71
- 6) Lane P; Brocker T; Hubele S; Padovan E; Lanzavecchia A; McConnell F. Soluble CD40 ligand can replace the normal T cell derived CD40 ligand signal to B cells in T cell-dependent activation. *J-Exp-Med.* 1993 Apr 1; 177(4): 1209-13
- 7) Mazzei GJ; Edgerton MD; Losberger C; Lecoanet-Henchoz S; Graber P; Durandy A; Gauchat JF; Bernard A, Allet B; Bonnefoy JY. Recombinant soluble trimeric CD40 ligand is biologically active. *J-Biol-Chem.* 1995 Mar 31; 270(13): 7025-8
- 8) Rathmell JC, Townsend SE, Xu JC, Flavell RA, and Goodnow CC. Expansion or elimination of B cells in vivo: dual roles for CD40- and Fas (CD95)-Ligands modulated by the B Cell antigen receptor. *Cell*, Vol. 87, 319-329, October 18, 1996.
- 9) Rothstein TL; Wang JK; Panka DJ; Foote LC; WangZ; Stanger B; Cui H; Ju ST; Marshak-Rothstein A. Protection against Fas-dependent Th1-mediated apoptosis by antigen receptor engagement in B cells. *Nature.* 1995 Mar 9; 374(6518): 163-5

- 10) Tsubata T; Murkami M; Nisitani S; Honjo T. Molecular mechanisms for B lymphocyte selection: induction and regulation of antigen-receptor-mediated apoptosis of mature B cells in normal mice and their defect in autoimmunity-prone mice. *Philos-Trans-R-Soc-Lond-B-Biol-Sci.* 1994 Aug 30; 345(1313): 297-301

15. Ordering Information

For orders please contact:

NORTH AMERICA

AXXORA, LLC
6181 Cornerstone Court East
Suite 103
San Diego, CA 92121-4727
Phone: (858) 550-8828
Fax: (858) 550-8825
E-mail: axxora-usa@axxora.com

SWITZERLAND/REST OF THE WORLD

ALEXIS CORPORATION
Industriestrasse 17, Postfach
CH-4415 Lausen / Switzerland
Phone: +41 61 926 89 89
Fax: +41 61 926 89 79
E-mail: alexis-ch@alexis-corp.com

GERMANY

AXXORA DEUTSCHLAND GmbH
Marie-Curie-Strasse 8
DE-79539 Lörrach
Phone: (07621) 5500 522
Fax: (07621) 5500 523
E-mail: axxora-de@axxora.com

UK & IRELAND

AXXORA (UK) LTD.
P.O. Box 6757
Bingham, Nottingham NG13 8LS
Phone: +44 1949 836111
Fax: +44 1949 836222
E-mail: axxora-uk@axxora.com

16 Reagent Preparation Summary

16.1 Wash Buffer

Add **Wash Buffer Concentrate** 20x (50 ml) to 950 ml distilled water.

Number of Strips	Wash Buffer Concentrate (ml)	Distilled Water (ml)
1 - 6	25	475
1 - 12	50	950

16.2 Assay Buffer (1x)

Add **Assay Buffer Concentrate** 20x (5 ml) to 95 ml distilled water.

Number of Strips	Assay Buffer Concentrate (ml)	Distilled Water (ml)
1 - 6	2.5	47.5
1 - 12	5.0	95.0

16.3 HRP-Conjugate

Make a 1:100 dilution of **HRP-Conjugate** in Assay Buffer (1x):

Number of Strips	HRP-Conjugate (ml)	Assay Buffer (1x) (ml)
1 - 6	0.06	5.94
1 - 12	0.12	11.88

16.4 Human sCD40L Standard

Reconstitute lyophilized **human sCD40L standard** with distilled water. (Reconstitution volume is stated on the label of the standard vial.)

16.5 Controls

Add 150 µl distilled water to lyophilized **controls**.

17 Test Protocol Summary

1. Remove dilution plate from aluminium pouch.
2. Determine the number of microwell strips required.
3. Prepare a standard dilution on the dilution plate: Add 100 µl Sample Diluent, in duplicate, to all standard wells of the dilution plate. Pipette 100 µl prepared standard into the first wells and create standard dilutions by transferring 100 µl from well to well. Discard 100 µl from the last wells.
Alternatively external standard dilution in tubes (see 9.4.1): Pipette 100 µl of these standard dilutions in the standard wells of the dilution plate.
4. Add 100 µl Sample Diluent, in duplicate, to the blank wells of the dilution plate.
5. Add 80 µl Sample Diluent to sample wells of the dilution plate.
6. Add 20 µl sample in duplicate, to designated sample wells of the dilution plate.
7. Prepare HRP-Conjugate.
8. Add 100 µl HRP-Conjugate to all wells of the dilution plate.
9. Remove coated microwell strips from aluminium pouch.
10. Wash coated microwell strips twice with Wash Buffer.
11. Transfer 150 µl of reaction mix from dilution plate to coated microwell strips.
12. Cover microwell strips and incubate 2 hours at room temperature (18° to 25°C) on a rotator set at 100 rpm.
13. Empty and wash microwell strips 3 times with Wash Buffer.
14. Add 100 µl of TMB Substrate Solution to all wells.
15. Incubate the microwell strips for about 10 minutes at room temperature (18° to 25°C).
16. Add 100 µl Stop Solution to all wells.
17. Blank microwell reader and measure colour intensity at 450 nm.

Note: If instructions in this protocol have been followed samples have been diluted 1:5 (20 µl sample + 80 µl Sample Diluent), the concentration read from the standard curve must be multiplied by the dilution factor (x 5).